



Gly-Vak® Toilet Line Scale Remover



Case Study

BEFORE GLY-VAK



Tail section of waste line before field test. Scale buildup of 6mm thickness.

AFTER GLY-VAK



Tail section after 45 days of field testing. Sani-Tank N was also used to remove softened scale. 95% of scale was removed.

HOW TO ORDER GLY-VAK

Contact your Celeste Account Representative or contact us at: 1-800-447-5775
www.celestecorp.com

USAGE

Toilet Line Scale Remover

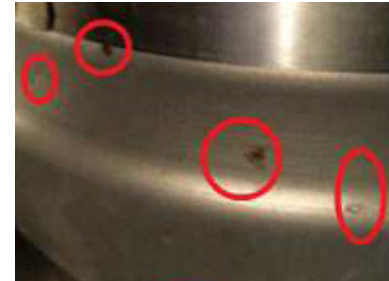
APPLICATION

Gly-Vak uses mild organic acids, proprietary surfactants, foaming and gelling agents to completely coat waste tube walls to prevent scale from being deposited and to soften existing scale for removal.



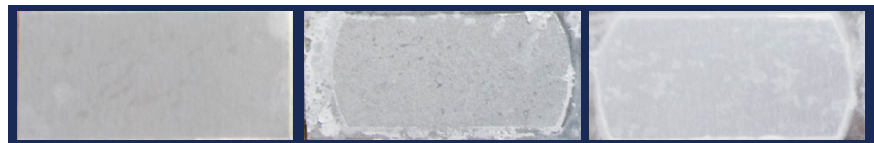
ISSUE

Competitor chemical contained a strong acid, causing severe corrosion in the vacuum waste system ball valve. This accelerated aging of the sealing in the ball valve, caused the sensor to corrode and perforate, and caused catastrophic failure of the toilet flush valve - resulting in replacement. Competitor chemical also had a pungent smell which could be harmful to the health of the maintenance crews.



RESOLUTION

Gly-Vak successfully prevented scale deposits while softening existing scale, with no harsh corrosive side effects.



Gly-Vak
minimal corrosion
Passed AMS Spec

Competitor A
heavy corrosion
Failed AMS Spec

Competitor B
heavy corrosion
Failed AMS Spec

Celeste Part #	Description	Case Specification	Pallet Specification
SP-GVAK/QT	Gly-Vak 12 x Quart Bottles	14 x 11 x 11 in, 31 lbs (36 x 28 x 28 cm, x 14 kg)	44 cases, 4 layers, 53 in (135 cm) height
SP-GVAK/GAL	Gly-Vak 4 x Gallon Jugs	13 x 13 x 12 in, 37 lbs (33 x 33 x 30 cm, 17 kg)	27 cases, 3 layers, 57 in (145 cm) height
SP-GVAK/55	Gly-Vak 55 Gallon Drum	36 x 23 in, 524 lbs (91 x 58 cm, 238 kg)	4 drums, 1 layer, 42 in (107 cm)